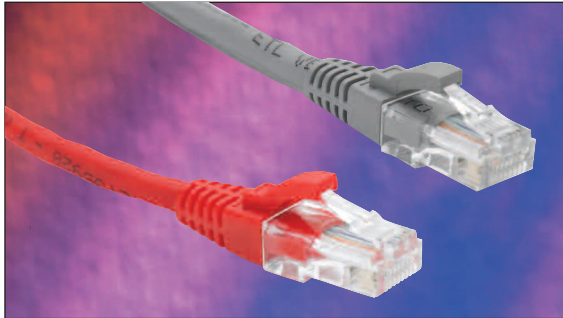


Excel Category 6a Shielded Twisted Pair (F/FTP) Patch Leads – LSOH



25 Year System Warranty

Foil screen design, each pair screened

Lightweight, Compact Design

LSOH Outer Sheath

Slimline Molded Strain Relief Boot

EC verified

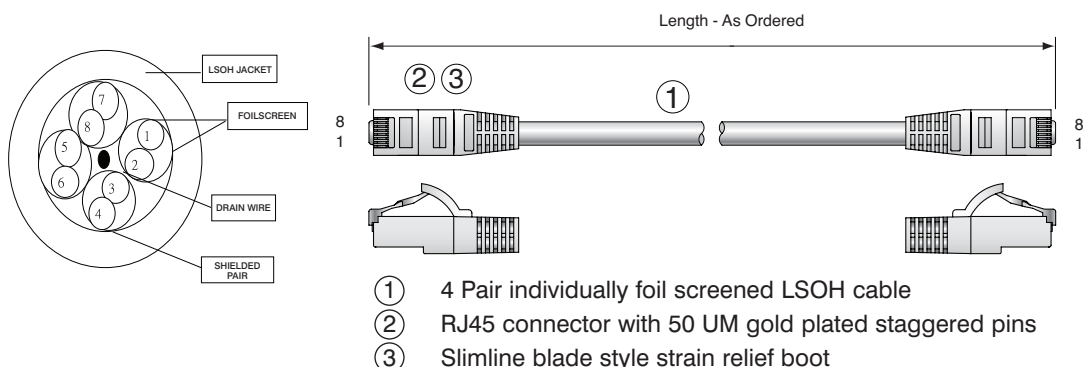
Features

- Specified to 500MHz
- Suitable for 10 Gigabit, 10GBase-T, Ethernet application
- Individual foil screen over each pair
- Blade style molded strain relief boot with clip protector
- Choice of Length and Colour
- Low Smoke Zero Halogen Outer Sheath
- 25 year system warranty

Product Overview

Excel Category 6a – Augmented Category 6 – cables, and associated connectors, take the performance capabilities of copper infrastructure to new levels. Designed to the current ISO and EIA/TIA standards for Class Ea augmented Category 6a performance these products are intended to deliver reliable, high network performance including support of emerging applications such as 10GBase-T, 10 Gigabit Ethernet.

Each Excel Category 6a patch leads consists of 4 twisted pairs of 26AWG stranded copper wires, an aluminium/polyester foil tape provides an individual screen for each pair. These pairs are then cabled together, with different lay lengths to ensure optimum performance. Staggered pin RJ45 shielded plugs, terminate the cable, and each lead is fitted with colour coded slimline molded boots, suitable for use in high density router or switch blades.



Construction

Conductor	26AWG (7/0.152mm), Stranded Plain Copper
Insulation	Foam Polyethylene
Screen applied to each pair	Aluminium Foil Tape
Drain Wire	26AWG (7/0.16mm), Stranded Tinned Copper
Outer Sheath	Flame resistant, Low Smoke Zero Halogen
Outer Diameter	5.7mm +/- 0.2mm
Installation Temperature Range	0 to +60c
Operating Temperature Range	-10 to +60c
Flame Retardance	IEC 60332-1
Smoke Emission	IEC 61034

Performance Overview

Excel Category 6a patch leads are designed, manufactured and tested in accordance with the ISO and EIA/TIA standards for augmented Category 6. The use of foil tape screens in the design of this cable ensure that systems are immune to performance concerns sometimes found in high speed, high frequency copper cable networks. Cables designed with pair screening such as this act against Alien Crosstalk, the inducement of noise from one 4 pair cable to an adjoining cable as well as protecting against signal loss through emissions and enabling immunity from disturbance's which could potentially be received from external sources.

Performance / Specification Table

Frequency MHz	Impedance Ω	Attenuation 100m Max.	NEXT dB	PSNEXT dB	ELFEXT dB	PSELFEXT dB	Return Loss dB
1	NA	2.2	74.3	62	63.3	60.3	20
4		4.1	65.3	60.5	51.2	48.2	23
8		5.7	60.8	55.6	45.2	42.2	24.5
10		6.4	59.3	54	43.3	40.3	25
16	100+/-15	8.1	56.2	50.6	39.2	36.2	25
20		9.1	54.8	49	37.2	34.2	25
31.25		10.2	53.3	47.3	35.3	32.3	24.2
62.5		11.4	51.9	45.7	33.4	30.4	23.3
100	100+/-22	16.3	47.4	40.6	27.3	24.3	20.7
125		20.8	44.3	37.1	23.3	20.3	19
200		30	39.8	31.9	17.2	14.2	16.4
250	100+/-25	33.8	38.3	30.2	15.3	12.3	15.6
300		37.3	37.1	28.8	13.7	10.7	14.9
400		43.6	35.3	25.8	11.2	8.2	13.8
500		49.3	33.8	23.2	9.3	6.3	13

System Warranty

When installed with Excel Category 6a cables and components by an accredited Excel Cabling Partner, this product is supported by a comprehensive 25 year warranty programme.

Typical Applications

- IEEE802.3 1000 Base-TX Gigabit Ethernet
- IEEE802.3an 10G Base-T Gigabit Ethernet
- Digital and analogue video
- 1.2/2.4Gbs ATM

Part Number Information

Part No.	Description
100-152	Excel Category 6a F/FTP Patch Lead, 2 metre Grey
100-153	Excel Category 6a F/FTP Patch Lead, 3 metre Grey
100-155	Excel Category 6a F/FTP Patch Lead, 5 metre Grey

Also available from stock in Red, Blue, Yellow and Green outer sheaths. Alternative lengths and colours are available subject to minimum order quantities and lead times. All cables are booted as standard.

EC verified. This product has been tested by the Delta EC Cabling Group and complies with the following standards - ISO/IEC 11801:2002 amendment 1 Class Ea, ISO/IEC TR 24750, ANSI/EIA/TIA-568-b.2-10 and ANSI/TIA/EIA TSB-155. For copies of test certification please contact your local Excel distributor, or visit www.excel-networking.com or www.delta.dk. Delta technical report N312480, Danak -19J1944 screened 4 connector channel model.

