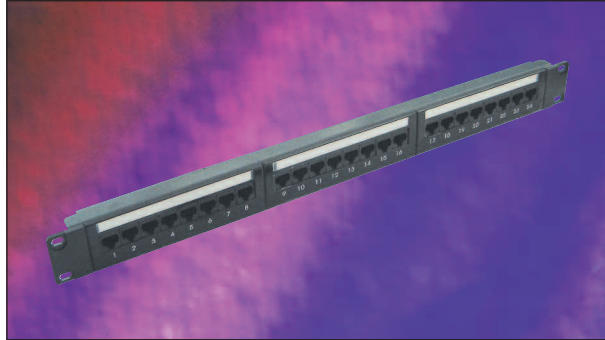


## Excel Plus Category 6 Unshielded Twisted Pair (UTP) Patch Panels



**25 Year System Warranty**

**Category 6 Compliant**

- TIA/EIA 568-B.2-1
- EN50173-1
- ISO/IEC 11801

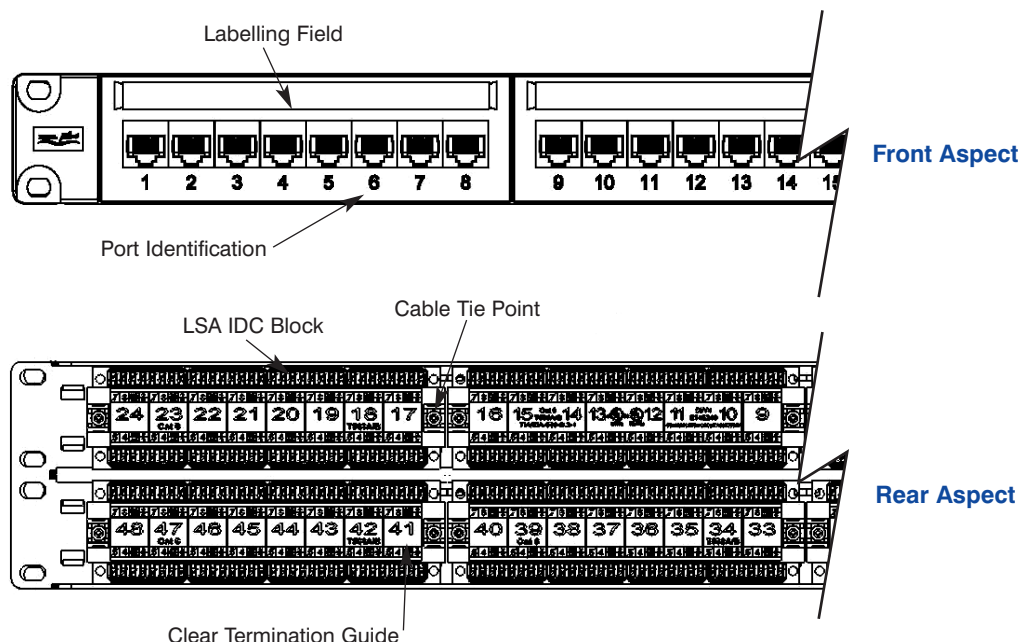
### Features

- Category 6 compliant
- Backward Compatible
- Choice of Port Density
- Built in Slide Label System
- Rear cable management
- LSA Style Termination Blocks
- 25 year system warranty
- BSRIA Number 1 private label, by market share for the last three years

### Product Overview

Excel Plus Category 6 UTP patch panels are manufactured and tested to the TIA/EIA 568-B.2-1, EN50173-1 and ISO/IEC 11801.2 Category 6 specifications and have been designed to comply with the link and channel performance requirements. Each panel consists of a number of 8 way blocks of RJ45 sockets, housed in a high quality plastic moulding. To the front of the panel this moulding contains the new easy to use slide label system. Each block of 8 sockets has its own label which can be removed from either side of the covered label field. The label strip itself is protected by a clear, tough plastic insert. Termination can be made using LSA compatible tooling, cable tie bridges are positioned between the IDC blocks to relieve cable stress.

Installation can be further enhanced by use of the optional rear cable management tray which is attached quickly and easily to the panel without the need for fixings.



## Performance Overview

Excel Category 6 patch panels are manufactured and tested to the Category 6 performance standards defined by the EIA/TIA, ISO and EN standards bodies. A range of performance characteristics are tested up to 250MHz including return loss, attenuation and near and far end crosstalk (NEXT and FEXT) for which both worst case and power sum tests are completed. Actual performance far exceeds the required standard – when tested in isolation and in circuit – resulting in significant headroom for even the most demanding of applications.

As well as providing link and channel compliance – when installed with Excel category 6 components – with the aforementioned specification – the panel is also backward compatible with Category 5 and 5e components.

## Performance / Specification Table

Specification	Category 6 ISO/IEC 11801 Class E, TIA/EIA-568B.2-1
Wiring Specification	TIA 258A/568B
Port Density	24Ports Per 1u
Dimensions	482mm wide x 29.7mm deep x 44mm (1u) or 88mm (2u) high
Installation Recommendation	Suits standard EIA 19" rack
RJ45 Jack	Min. life 750 insertions
RJ45 Jack	50 Micron Gold Plated contact pins
IDC Contacts	Suitable for LSA compatible tooling Maximum 200 reterminations
NEXT at 250MHz	Category 6 38.5dB @250MHz (Power Sum)
FEXT at 250MHz	Category 6 29.0dB @250MHz (Power Sum)

## System Warranty

When installed with Excel Category 6 cables and components by an accredited Excel Cabling Partner, this product is supported by a comprehensive 25 year product and applications warranty. This warranty assures not just standard compliance but also backward compatibility with Category 5 and 5e cables and components.

## Typical Applications

- 100 Base-TX
- 1000 Base-TX Gigabit Ethernet
- Composite Video
- Token Ring
- 155 Mbps ATM
- 622 Mbps ATM

## Part Number Information

Part No.	Description
100-372	Excel Plus Category 6 24 port 1u Black Patch Panel
100-380	Excel Plus Category 6 48 port 2u Black Patch Panel