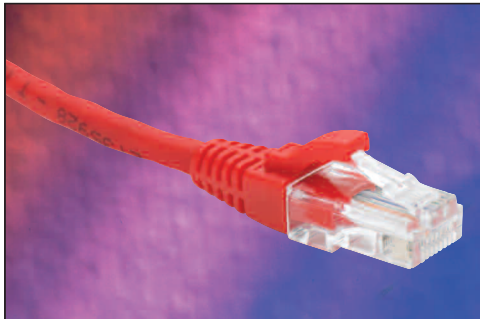


Excel Category 6 Unshielded Twisted Pair (UTP) Patch Leads - LSOH



LSOH Outer Sheath as standard

Independently Verified

25 Year System Warranty

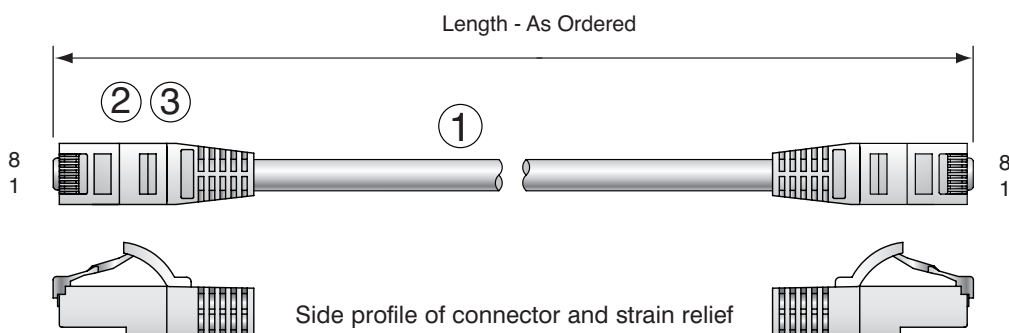
Blade Style Strain Relief Boots

Features

- Category 6 compliant
- Backward Compatible with Category 5e
- 'Stepped' RJ45 connector pins
- Blade style strain relief boot with clip protector
- Choice of colour
- Independently verified
- 25 year system warranty

Product Overview

Excel Category 6 UTP patch leads are manufactured and tested to ensure the installed cabling system is compliant with the EIA/TIA/ISO/IEC + EN channel specification requirements. Performance matched and 'tuned' to the performance characteristics of the Excel Category 6 range these leads will provide optimum performance levels. A choice of lengths and colours are available, colour coded slimline molded boots suitable for use in high density router or switch blades are standard and each cable is supplied individually bagged. Each cable has a low smoke zero halogen outer sheath as standard.



- ① 4 Pair unshielded LSOH cable
- ② RJ45 connector with 50 UM gold plated staggered pins
- ③ Slimline blade style strain relief boot

Construction

Conductor	24AWG (7/0.145mm), Stranded Plain Copper
Insulation	Polyolefin
Outer Sheath	Flame resistant, Low Smoke Zero Halogen
Outer Diameter	6.0mm +/- 0.2mm
Installation Temperature Range	0 to +60c
Operating Temperature Range	-10 to +60c
Flame Retardance	IEC 60332-1
Smoke Emission	IEC 61034

Performance Overview

Excel Category 6 patch leads are manufactured and tested to the latest specification requirements as defined by the relevant standards bodies. A range of performance characteristics are tested upto 250MHz including return loss, attenuation and near and far end crosstalk (NEXT and FEXT) for which both worst case and power sum tests are completed. Actual performance far exceeds the required standard – when tested in isolation and in circuit – resulting in significant headroom for even the most demanding of applications.

As well as providing link and channel compliance – when installed with Excel Category 6 components – with the aforementioned specification – the panel is also backward compatible with Category 5 and 5e components.

Performance / Specification Table

Frequency (MHZ)	Impedance (Ohm)	Return Loss (dB)	Attenuation (dB)	NEXT (dB)	PSNEXT (dB)	ELFEXT (dB)
1.0		20.00	2.45	74.31	72.31	67.75
4.0		23.01	4.58	65.28	63.28	55.71
10.0		25.00	7.22	59.31	57.31	47.75
16.0	100+ /15%	25.00	9.18	56.25	54.25	43.67
20.0		25.00	10.30	54.80	52.80	41.73
25.0		24.17	11.57	53.35	51.35	39.79
31.3		23.33	13.00	51.89	49.89	37.86
62.5		20.74	18.80	47.38	45.38	31.83
100.0		18.99	24.26	44.31	42.31	27.75
200.0	100+ /22%	16.40	35.70	39.80	37.80	21.73
250.0	100+ /32%	15.57	40.55	38.35	36.35	19.79

System Warranty

When installed with Excel Category 6 cables and components by an accredited Excel Cabling Partner, this product is supported by a comprehensive 25 year product and applications warranty. This warranty assures not just standard compliance but also backward compatibility with Category 5 and 5e cables and components.

Typical Applications

- 100 Base-TX
- 1000 Base-TX
- Composite Video
- 155 Mbps ATM
- Token Ring
- 622 Mbps ATM

Part Number Information

Part No.	Description
100-310	Excel Category 6 1 metre Grey UTP patch lead
100-311	Excel Category 6 2 metre Grey UTP patch lead
100-312	Excel Category 6 3 metre Grey UTP patch lead
100-357	Excel Category 6 4 metre Grey UTP patch lead
100-314	Excel Category 6 5 metre Grey UTP patch lead
100-318	Excel Category 6 6 metre Grey UTP patch lead
100-352	Excel Category 6 8 metre Grey UTP patch lead
100-335	Excel Category 6 10 metre Grey UTP patch lead
100-336	Excel Category 6 15 metre Grey UTP patch lead
100-337	Excel Category 6 20 metre Grey UTP patch lead

Also available in red, green, blue & yellow. Please contact our sales office for details



Cabletech (South) Ltd
Unit 49, Uddens Trading Estate, Wimborne
Dorset, BH21 7NL, GB

Tel: 01202 871515 Fax: 01202 870758

Email: info@cabletech-south.co.uk Web: www.cabletech-south.co.uk