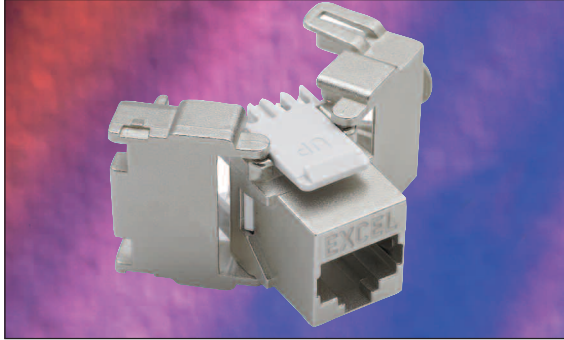


Excel Category 6 Shielded Twisted Pair (FTP) Keystone Jack – Toolless



25 year system warranty

Toolless Termination

Supports Gigabit Ethernet

360° Shielding - Die cast housing

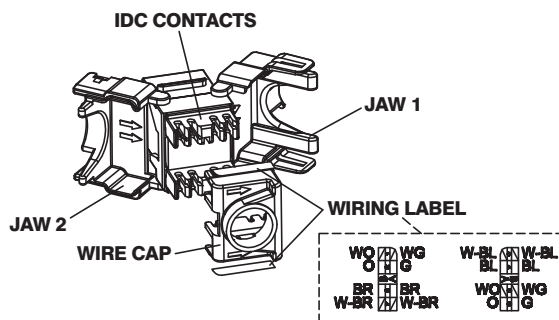
EC verified

Features

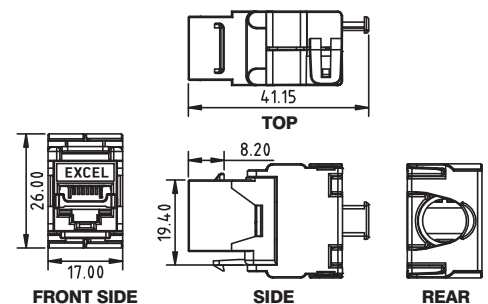
- Category 6 compliant
- High quality die cast housing
- Toolless termination design
- Suitable for patch panel and faceplate mounting
- Suitable for installation in 37mm deep back box with bevelled faceplate
- Lifetime Product Warranty
- 25 year system warranty
- 360° Shielding protects against alien crosstalk

Product Overview

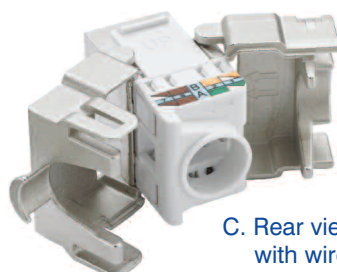
The Excel Category 6 Shielded Twisted Pair (F/FTP) Keystone Jack, is an independently verified toolless termination RJ45 socket suitable for mounting in range of housings from patch panels, faceplates and shutters to sub floor boxes, and work area distribution enclosures. The socket itself is housed in a high quality zinc die cast housing, which opens at the rear in a butterfly manner to reveal the IDC termination points. Once the conductors of the cable to be terminated are fed into a management cap the process is completed by snapping the 'butterfly wings' together with minimal, but firm pressure.



A. Rear view of Keystone



B. Keystone profiles. Dimensions in mm



C. Rear view of Keystone with wire cap attached



D. Keystone Jacks mounted in chrome style patch panel, Part No 100-028

Performance Overview

The Excel Category 6 keystone jack is designed and manufactured to comply with the requirements of Category 6/Class E as defined in ISO 11801 2nd edition, and EIA/TIA568B. A range of performance characteristics are tested upto 250Mhz including return loss, attenuation, and near end cross talk (NEXT) and far end cross talk (FEXT). Both worst case and power sum test methods are applied. The product design incorporates staggered 50 micron plated contact pins within the jack to ensure optimum performance levels are achieved, the die cast housing around the terminated pairs ensures Alien Crosstalk is minimised. The keystone jack is fully interoperable and backward compatible with Category 5e products.

Performance / Specification Table

Specification:	Category 6 ISO Class E 2002 EIA\TIA 568
Wiring Specification:	TIA 258A/568B
Dimensions:	17mm wide x 41.15mm deep x 26mm high
Installation Recommendation:	Suits minimum of 37mm back boxes when installed with beveled faceplate
RJ45 Jack:	Min. life 750 insertions
RJ45 Jack:	50 Micron Gold Plated contact pins
NEXT at 250MHz	Category 6 39.1dB @250MHz (Power Sum)
FEXT at 250MHz	Category 6 27.0dB @250MHz (Power Sum)

System Warranty

When installed with Excel Category 6 cables by an accredited Excel Cabling Partner this product is supported by a comprehensive 25 year product and applications warranty.

Typical Applications

- 1000Base-Tx
- 100Base-Tx
- 10Base-T
- 155 Mbps ATM
- 622Mbps ATM

Part Number Information

Part No.	Description
100-210	Excel Category 6 FTP Butterfly Style Toolless Keystone Jack

EC verified. This product has been tested by the Delta EC Cabling Group and complies with the following standards - ISO/IEC 11801:2002 2nd edition, IEC 61156-5:2002, en50173-1:2007 and ANSI/EIA/TIA-568-b.2-1. For copies of test certification please contact you local Excel distributor, or visit www.excel-networking.com or www.delta.dk.



Part Number Information – Mounting Hardware

Part No.	Description
100-014	Shuttered facia, 50x25mm, Euromod
100-018	Shuttered facia, 38x22.5mm, 6c
100-025	Unloaded 16 port Black patch panel frame
100-026	Unloaded 24 port Black patch panel frame
100-027	Unloaded 16 port Chrome patch panel frame
100-028	Unloaded 24 port Chrome patch panel frame

NB. All patch panels are supplied with cage nuts, earth cable, and rear management tray



Cabletech (South) Ltd
Unit 49, Uddens Trading Estate, Wimborne
Dorset, BH21 7NL, GB

Tel: 01202 871515 Fax: 01202 870758

Email: info@cabletech-south.co.uk Web: www.cabletech-south.co.uk