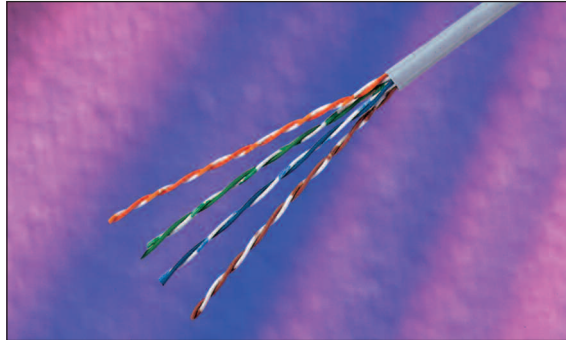


Excel Category 5e Unshielded Twisted Pair (UTP) Cable



25 Year System Warranty

Supports Gigabit Ethernet

Metre Marked 305-0

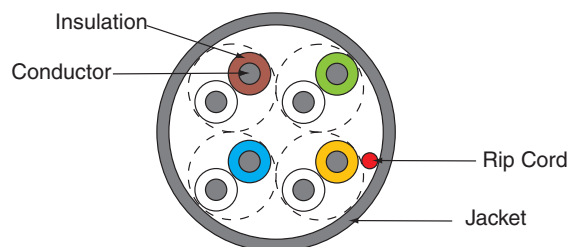
Features

- Category 5e compliant
- Power Sum Compliant
- Choice of Colour
- 305 to 0 Metre Marked
- Available in double box with outer carton for added protection
- 25 Year System Warranty
- BSRIA Number 1 private label, by market share for the last three years

Product Overview

Excel Category 5e UTP Cables are manufactured, tested and verified to the ISO11801 EIA/TIA standards for enhanced performance Category 5e cables.

Each cable consists of 8 colour coded polyethelene insulated conductors. These are twisted together to form 4 pairs with varying lay lengths. These pairs, together with a strong nylon rip cord are jacketed in a heat resistant PVC material. The printing detail on the sheath, includes the cables part number, specification details and a unique 305-0 metre marking within each box supplied, allowing for quick and easy measurement of cable installed and the amount remaining within the box. A choice of jacket colour enables departmental or application identification where necessary.



Specification

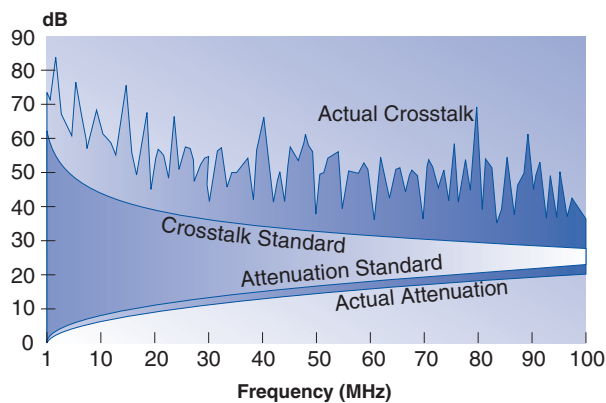
Overall Diameter	5.15mm
Operation Temperature Range	-20°C to +75°C
Bend Radius	4 x overall diameter installed, 8x installing

Performance Overview

Excel Category 5e cables are manufactured and tested to the Category 5 enhanced standards as defined by the EIA/TIA and ISO standards' bodies. Swept frequency tests are applied to each critical performance characteristic, such as near end cross talk (NEXT) and far end cross talk (FEXT). Both Worst Case and Power Sum Test methods are applied. Actual performance exceeds the required standard by a considerable margin ensuring sufficient headroom for even the most demanding applications.

Performance Table

Frequency (MHz)	Impedance (ohm)	SRL (dB)	Attenuation (dB/100m)	NEXT Worst Pair (dB)	NEXT Power Sum (dB)	ELFEXT Worst Pair (dB)	ELFEXT Power Sum (dB)	Velocity of Propagation (%)
0.772		—	1.8	67	64	—	—	
1.0		19	2.0	66	62	64	61	
4.0		20.8	4.1	57	53	52	49	
8.0		21.7	5.8	52	48	46	43	
10.0		22	6.5	51	47	44	41	
16.0	100 ± 15	22	8.2	48	44	40	37	70
20.0		22	9.3	46	42	38	35	
25.0		21.3	10.4	45	41	36	33	
31.25		20.6	11.7	43	39	34	31	
62.5		18.5	17.0	39	35	28	25	
100.0		17.1	22.0	36	32	24	21	



System Warranty

When installed with Excel Patch Panels and Data Outlets by an accredited Excel Cabling Partner, this product is supported by a comprehensive 25 year product and applications warranty.

Typical Applications

- 10 Base-T
- 100 Base-TX
- Token Ring
- 1000 Base T Gigabit Ethernet
- 155 Mbps ATM
- 622 Mbps ATM

Part Number Information

Part No.	Description
100-065	Excel Category 5e Cable Grey, 305MTR Fast Feed Box
100-059	Excel Category 5e Cable Grey, 500MTR Fast Feed Box
100-060	Excel Category 5e Cable White, 305MTR Fast Feed Box
100-061	Excel Category 5e Cable Red, 305MTR Fast Feed Box
100-062	Excel Category 5e Cable Blue, 305MTR Fast Feed Box
100-063	Excel Category 5e Cable Green, 305MTR Fast Feed Box
100-064	Excel Category 5e Cable Yellow, 305MTR Fast Feed Box