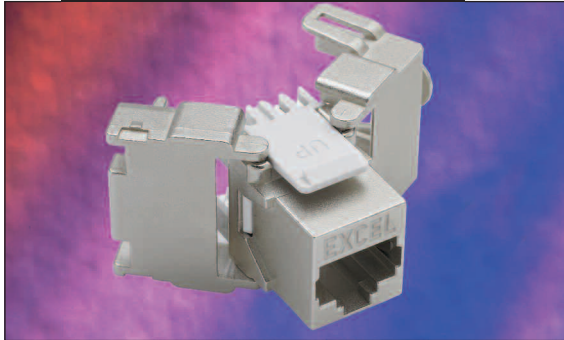


## Excel Category 5e Shielded Twisted Pair (FTP) Keystone Jack – Toolless



25 year system warranty

Toolless Termination

Supports Gigabit Ethernet

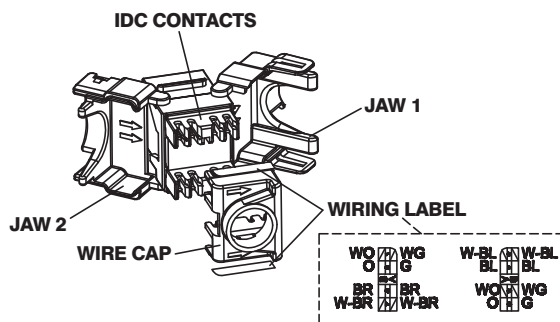
360° Shielding - Die cast housing

### Features

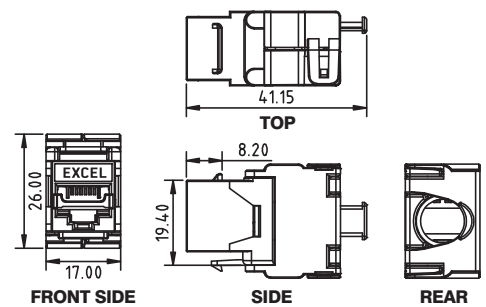
- Category 5e Compliant
- High quality die cast housing
- Toolless termination design
- Suitable for patch panel and faceplate mounting
- Suitable for installation in 37mm deep back box with bevelled faceplate
- Lifetime Product Warranty
- 25 year system warranty available
- Independently verified
- 360° Shielding protects against alien crosstalk

### Product Overview

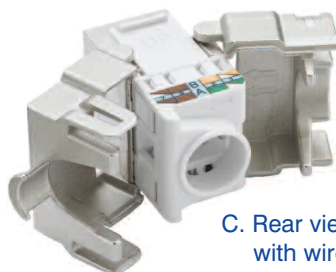
The Excel Category 5e Shielded Twisted Pair (F/FTP) Keystone Jack, is a toolless termination RJ45 socket suitable for mounting in range of housings from patch panels, faceplates and shutters to sub floor boxes, and work areas distribution enclosures. The socket itself is housed in a high quality zinc die cast housing, which opens at the rear in a butterfly manner to reveal the IDC termination points. Once the conductors of the cable to be terminated are fed into a management cap the process is completed by snapping the 'butterfly wings' together with minimal, but firm pressure. A choice of Patch Panel frames with either 16 or 24 port density in both black and chrome are available.



A. Rear view of Keystone



B. Keystone profiles. Dimensions in mm



C. Rear view of Keystone with wire cap attached



D. Keystone Jacks mounted in chrome style patch panel, Part No 100-028

## Performance Overview

The Excel Category 5e keystone jack is designed and manufactured to comply with the requirements of Category 5e/Class D as defined in ISO 11801 2nd edition, and EIA/TIA568. A range of performance characteristics are tested upto 100MHz including return loss, attenuation, near end cross talk (NEXT) and far end cross talk (FEXT). Both worst case and power sum test methods are applied. The product design incorporates staggered 50 micron plated contact pins within the jack to ensure optimum performance levels are achieved, the die cast housing around the terminated pairs ensures Alien Crosstalk is minimised. Support of applications such as Gigabit Ethernet is guaranteed over channel distances of upto 100 metres.

## Performance / Specification Table

Specification:	Category 5e ISO Class D 2002 EIA\TIA 568
Wiring Specification:	TIA 258A/568B
Dimensions:	17.00mm wide x 41.15mm deep x 26.00mm high
Installation Recommendation:	Suits minimum of 37mm back boxes when installed with beveled faceplate
RJ45 Jack:	Min. life 750 insertions
RJ45 Jack:	50 Micron Gold Plated contact pins
NEXT at 250MHz	Category 5e 39.5dB @100MHz (Power Sum)
FEXT at 250MHz	Category 5e 30.4dB @100MHz (Power Sum)

## System Warranty

When installed with Excel Category 5e Patch Panels and Cables by an accredited Excel Cabling Partner this product is supported by a comprehensive 25 year product and applications warranty.

## Typical Applications

- 1000Base-Tx
- 10Base-Tx
- 155 Mbps ATM
- 100Base-Tx
- 622Mbps ATM

## Part Number Information

Part No.	Description
100-906	Excel Category 5e FTP Butterfly Style Toolless Keystone Jack

## Part Number Information – Mounting Hardware

Part No.	Description
100-014	Shuttered facia, 50x25mm, Euromod
100-018	Shuttered facia, 38x22.5mm, 6c
100-025	Unloaded 16 port Black patch panel frame
100-026	Unloaded 24 port Black patch panel frame
100-027	Unloaded 16 port Chrome patch panel frame
100-028	Unloaded 24 port Chrome patch panel frame

NB. All patch panels are supplied with cage nuts, earth cable, and rear management tray