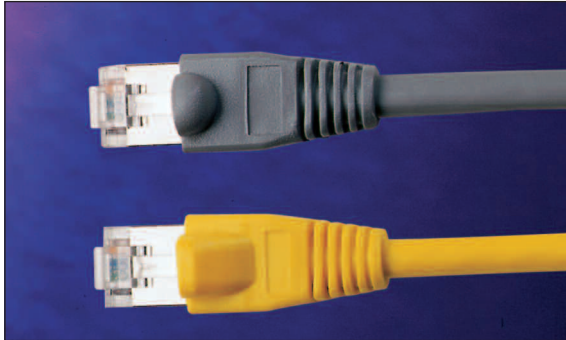


Excel Category 5e Shielded Twisted Pair (FTP) Patch Leads



ETL Verified

25 Year System Warranty

Features

- Category 5e compliant
- ETL Verified
- Foil Tape Screen
- Highly Flexible
- Choice of Colour
- Individually Bagged
- Fitted with Strain Relief Boots
- BSRIA Number 1 private label, by market share for the last three years

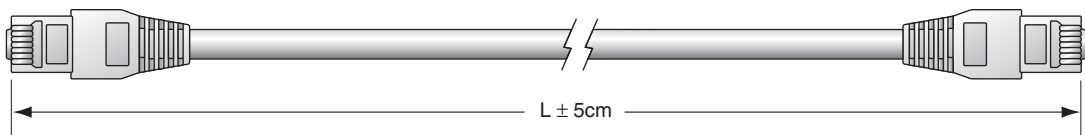
Product Overview

Excel Category 5e FTP Patch Leads are manufactured, tested and independently verified to the ISO11801 Category 5e and EIA/TIA 568 standards.

Each cable consists of 8 colour coded stranded conductors twisted together to form 4 pairs with varying lay lengths. The soft PVC outer sheath, coupled with the stranded conductors, results in a highly flexible cable. The heat resistant UL rated outer sheath is clearly printed with specification details. A choice of jacket colours enables departmental or application identification, where necessary. Cables are fitted with plastic strain relief boots, for applications that may require continuous patching or a degree of stress relief applied to each cable. The booted is shaped, to also provide protection to the latch of the connector.

RJ 45 PLUG (8P8C-SH)

RJ 45 PLUG (8P8C-SH)



Performance Overview

Excel Category 5e cables are manufactured to and tested to the current Category 5 enhanced standards as defined by the EIA/TIA and ISO standards' bodies. Swept frequency tests are applied to each critical performance characteristic, such as near end cross talk (NEXT). Both Worst Case and Power Sum Test methods are applied. Actual performance exceeds the required standard by a considerable margin ensuring sufficient headroom for even the most demanding applications.

Performance Table

Frequency (MHz)	Impedance (ohm)	Attenuation (dB/100m)	NEXT Worst Pair (dB)
0.772		2.2	—
1.0		2.4	64
4.0		4.9	52
8.0		7.0	46
10.0		7.8	44
16.0	100 ± 15	9.9	40
20.0		11.2	38
25.0		12.5	36
31.25		14.1	34
62.5		20.4	28
100.0		26.4	24

System Warranty

When installed with Excel Patch Panels and Data Outlets by an accredited Excel Cabling Partner, this product is supported by a comprehensive 25 year product warranty.

Typical Applications

- 10 Base-T
- 100 Base-TX
- Token Ring
- 155 Mbps ATM
- 622 Mbps ATM

Part Number Information

Part No.	Description
SHB00XMPLY	Excel Booted RJ45 Patch Lead

X = Length 0.5 to 10 Metre Available

YY = Colours available: Grey, Red, Blue, Green & Yellow