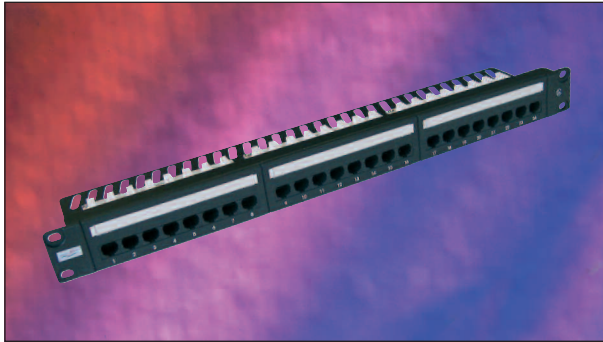


## Excel Plus Category 5e Unshielded Twisted Pair (UTP) Right Angle Patch Panel



25 Year System Warranty

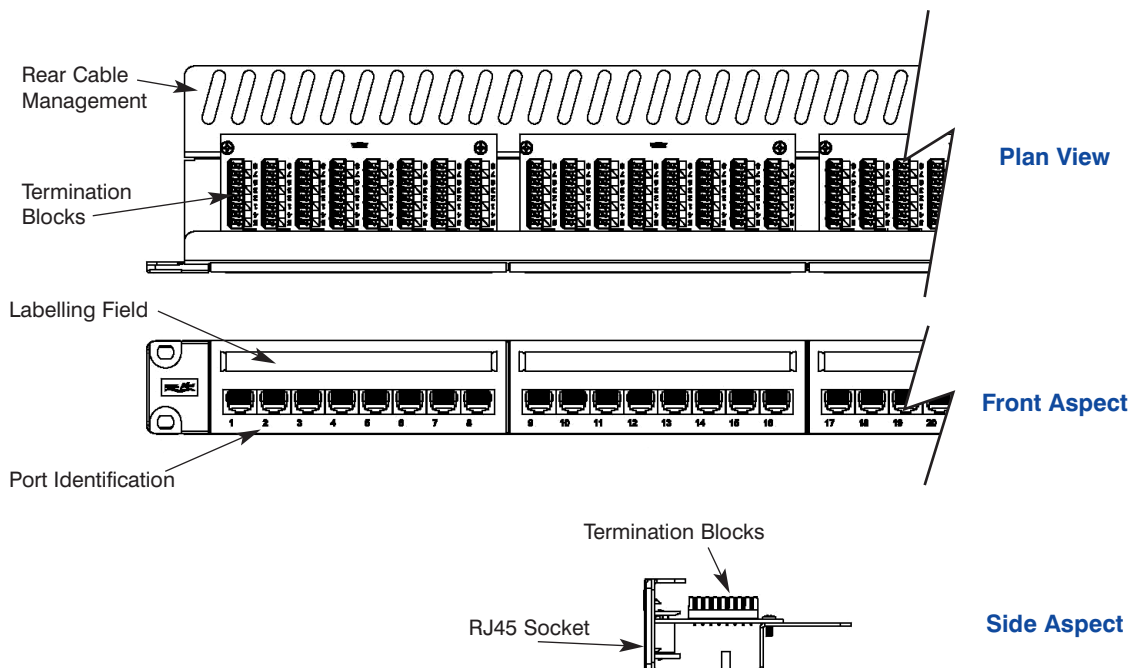
Supports Gigabit Ethernet

### Features

- Category 5e compliant
- Power Sum Compliant
- Choice of Port Density
- Choice of Labelling System
- LSA Style Termination Blocks
- 25 Year System Warranty
- Pre Printed 1-96 Self Adhesive Labelling included
- BSRIA Number 1 private label, by market share for the last three years

### Product Overview

Excel Category 5e Patch Panels comply with the current standards for enhanced Category 5. Each panel offers a choice of labelling with the option to use the screen printed fields on the panel facia or the slide label system or pre printed 1-96 labelling scheme which is enclosed with each panel. Ease of installation is assured with built in rear cable management at a 90° angle to the panel facia. This tray also holds the LSA termination blocks. Cage nuts and mini cable ties are included with each panel.



## Performance Overview

Excel Category 5e Patch Panels are manufactured to and tested to the current Category 5 enhanced standards as defined by the EIA/TIA and ISO standards' bodies. Swept frequency tests are applied to each critical performance characteristic, such as near end cross talk (NEXT) and far end cross talk (FEXT). Both Worst Case and Power Sum Test methods are applied. Actual performance exceeds the required standard by a considerable margin ensuring sufficient headroom for even the most demanding applications.

## Performance / Specification Table

Specification	Category 5e ISO Class D 2002 EIA\TIA 568B
Wiring Specification	TIA 258A/568B
Port Density	24Ports Per 1u
Dimensions	482.3mm wide x 97.7mm deep x 44mm high
Installation Recommendation	Suits standard EIA 19" rack
RJ45 Jack	Min. life 750 insertions
RJ45 Jack	50 Micron Gold Plated contact pins
IDC Contacts	Suitable for LSA compatible tooling. Maximum 200 reterminations
NEXT at 100MHz	Category 5e 34.8dB @100MHz (Power Sum)
FEXT at 100MHz	Category 5e 29.8dB @100MHz (Power Sum)

## System Warranty

When installed with Excel Cables and Data Outlets by an accredited Excel Cabling Partner, this product is supported by a comprehensive 25 year product and applications warranty.

## Typical Applications

- 10 Base-T
- 100 Base-TX
- Token Ring
- 1000 Base T Gigabit Ethernet
- 155 Mbps ATM
- 622 Mbps ATM

## Part Number Information

Part No.	Description
100-490	Excel Plus 24 Port 1u Right Angle Black Patch Panel