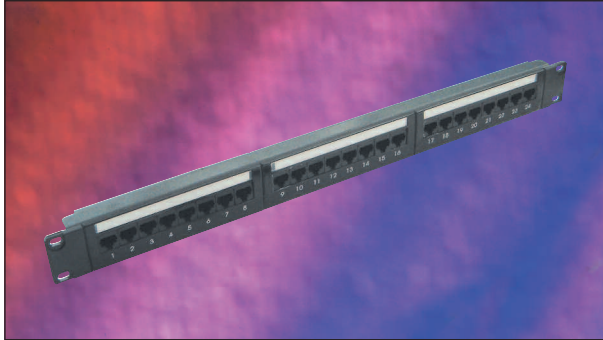


## Excel Plus Category 5e Unshielded Twisted Pair (UTP) Patch Panels



25 Year System Warranty

Supports Gigabit Ethernet

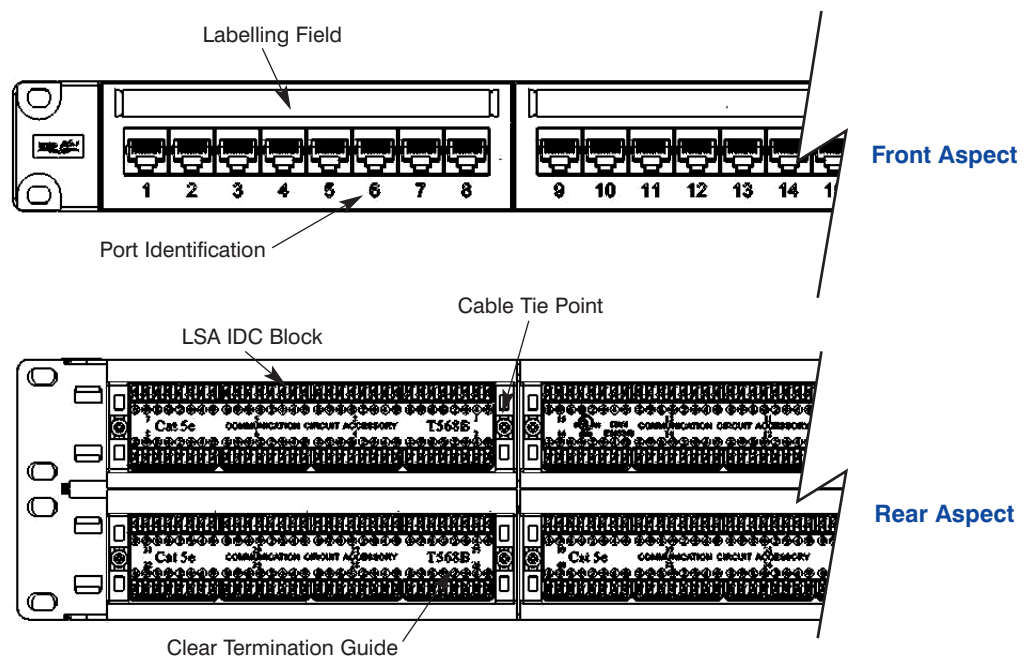
Built in Slide Label System

### Features

- Category 5e compliant
- Power Sum Compliant
- Choice of Port Density
- Built in Slide Label System
- LSA Style Termination Blocks
- 25 Year System Warranty
- Pre Printed 1-96 Self Adhesive Labelling included
- BSRIA Number 1 private label, by market share for the last three years

### Product Overview

Excel Plus Category 5e Patch Panels comply with the current standards for enhanced Category 5. Each panel consists of a number of 8 way blocks of RJ45 sockets, housed in a high quality plastic moulding. To the front of the panel this moulding contains the new easy to use slide label system. Each block of 8 sockets has its own label which can be removed from either side of the covered label field. The label strip itself is protected by a clear, tough plastic insert. Ease of installation is assured with ample rear cable management positions and LSA IDC blocks. A choice of port density – either 16 or 24 ports per 1u of rack space – is available to suit all applications. Cage nuts and mini cable ties are included with each panel.



## Performance Overview

Excel Category 5e Patch Panels are manufactured to and tested to the current Category 5 enhanced standards as defined by the EIA/TIA and ISO standards' bodies. Swept frequency tests are applied to each critical performance characteristic, such as near end cross talk (NEXT) and far end cross talk (FEXT). Both Worst Case and Power Sum Test methods are applied. Actual performance exceeds the required standard by a considerable margin ensuring sufficient headroom for even the most demanding applications.

## Performance / Specification Table

Specification	Category 5e ISO Class D 2002 EIA\TIA 568B
Wiring Specification	TIA 258A/568B
Port Density	24Ports Per 1u
Dimensions	482mm wide x 28.4mm deep x 44mm (1u) or 88mm (2u) high
Installation Recommendation	Suits standard EIA 19" rack
RJ45 Jack	Min. life 750 insertions
RJ45 Jack	50 Micron Gold Plated contact pins
IDC Contacts	Suitable for LSA compatible tooling Maximum 200 reterminations
NEXT at 100MHz	Category 5e 39.7dB @100MHz (Power Sum)
FEXT at 100MHz	Category 5e 30.1dB @100MHz (Power Sum)

## System Warranty

When installed with Excel Cables and Data Outlets by an accredited Excel Cabling Partner, this product is supported by a comprehensive 25 year product and applications warranty.

## Typical Applications

- 10 Base-T
- 100 Base-TX
- Token Ring
- 1000 Base T Gigabit Ethernet
- 155 Mbps ATM
- 622 Mbps ATM

## Part Number Information

Part No.	Description
100-470	Excel Plus 24 Port 1u Black Patch Panel
100-480	Excel Plus 48 Port 2u Black Patch Panel