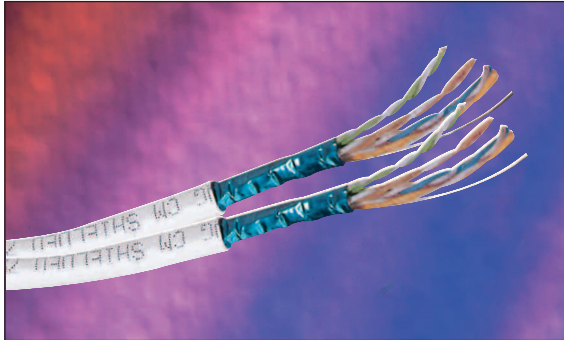


Excel Dual Category 5e Shielded Twisted Pair (FTP) Cable



25 Year System Warranty

Supports Gigabit Ethernet

Innovative Figure 8 Design

Features

- Category 5e compliant
- 2 x 4 pair dual construction
- Overall foil tape screen
- Low Smoke Zero Halogen Outer Sheath
- 25 Year System Warranty

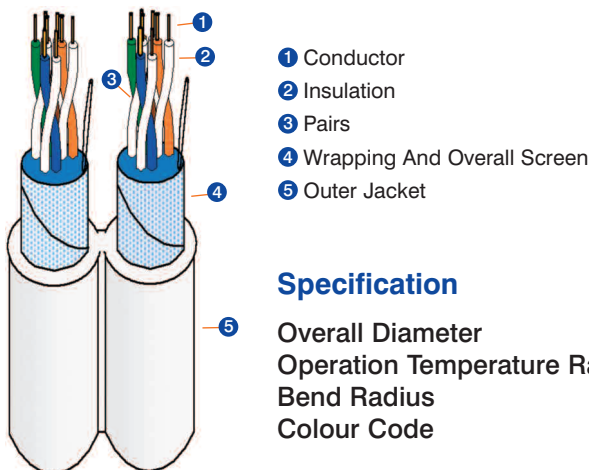
Product Overview

Excel Category 5e FTP Cables are manufactured, tested and independently verified to the ISO11801 and EIA/TIA standards for enhanced performance Category 5e.

Each cable 'leg' consists of 8 colour coded 24AWG polyethelene insulated conductors. These are twisted together to form 4 pairs with varying lay lengths. These pairs are wrapped in an aluminium mylar tape screen with a solid 24AWG drain wire and jacketed in a low smoke zero halogen rated material.

Two of these 4 pair units are then extruded together to form a dual 'figure of 8' finished cable. A small web of LSOH compound joins the two 4 pair units together and provides a quick and easy method of separating the cables for termination.

The printing detail on the sheath of one of the cable legs, includes the cables part number, specification details and sequential metre marking.



- 1 Conductor
- 2 Insulation
- 3 Pairs
- 4 Wrapping And Overall Screen
- 5 Outer Jacket

Specification

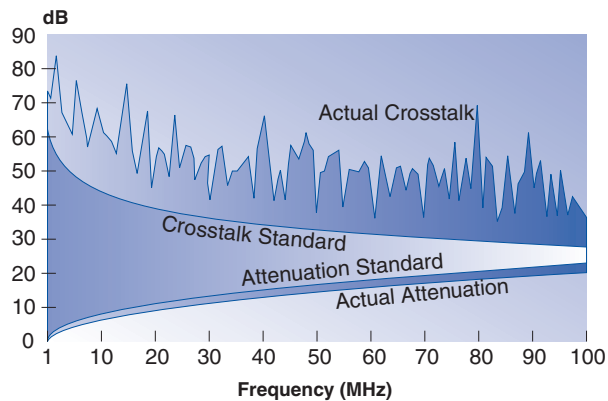
Overall Diameter	2 x 6.3 ± 0.3mm
Operation Temperature Range	-20°C to +75°C
Bend Radius	4 x overall diameter installed, 8x installing
Colour Code	Blue/White, Orange/White, Green/White, Brown/White, per 4 pair cable

Performance Overview

Excel Category 5e cables are manufactured to and tested to the current Category 5 enhanced standards as defined by the EIA/TIA and ISO standards' bodies. Swept frequency tests are applied to each critical performance characteristic, such as near end cross talk (NEXT) and far end cross talk (FEXT). Both Worst Case and Power Sum Test methods are applied. Actual performance exceeds the required standard by a considerable margin ensuring sufficient headroom for even the most demanding applications.

Performance Table

Frequency (MHz)	SRL (dB)	Attenuation (dB/100m)	NEXT Worst Pair (dB)	NEXT Power Sum (dB)	ELFEXT Worst Pair (dB)	ELFEXT Power Sum (dB)	Velocity of Propagation (%)
0.772	—	1.8	67	64	—	—	
1.0	19	2.0	66	62	64	61	
4.0	20.8	4.1	57	53	52	49	
8.0	21.7	5.8	52	48	46	43	
10.0	22	6.5	51	47	44	41	
16.0	22	8.2	48	44	40	37	68
20.0	22	9.3	46	42	38	35	
25.0	21.3	10.4	45	41	36	33	
31.25	20.6	11.7	43	39	34	31	
62.5	18.5	17.0	39	35	28	25	
100.0	17.1	22.0	36	32	24	21	



System Warranty

When installed with Excel Category 5e Patch Panels and Data Outlets by an accredited Excel Cabling Partner, this product is supported by a comprehensive 25 year product and applications warranty.

Typical Applications

- 10 Base-T
- 100 Base-TX
- Token Ring
- 1000 Base T Gigabit Ethernet
- 155 Mbps ATM
- 622 Mbps ATM

Part Number Information

Part No.	Description
100-218/WHT	Excel Dual Category 5e LSOH Cable White, 500 metre drum