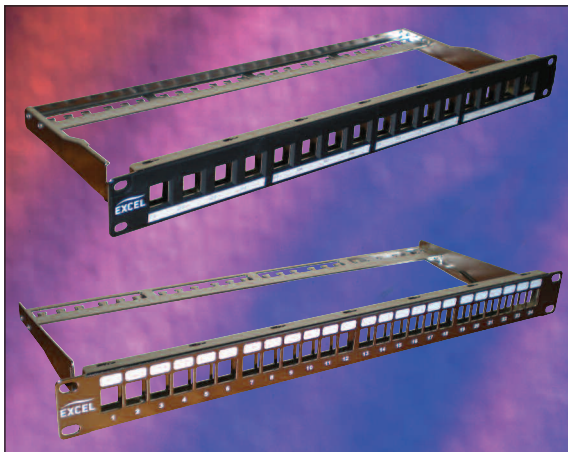


EXCEL

Excel Keystone Jack Patch Panel Frames – Unloaded



Compatible with Excel toolless keystone jacks

Choice of Black and Chrome Finish

Option to part or fully load

Features

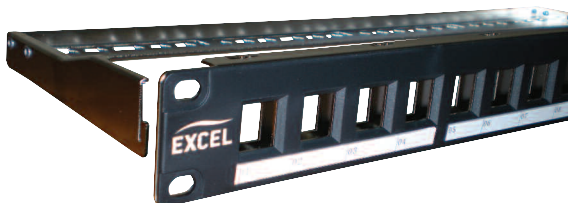
- Supplied with snap on rear management tray
- Supplied with earthing kit
- Choice of port density - 16, 24 ports per 1u, and 2u 48 port in black
- Compatible with Excel toolless shielded keystone jacks
- Choice of colour – Black or Chrome
- Modular design is ideal for standard and pre-terminated installations

Product Overview

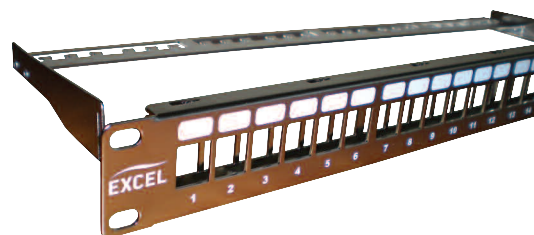
Excel keystone jack patch panel frames are available for mounting of the range of shielded and unshielded Excel toolless keystone jacks. Two finishes are available, a traditional black facia design and a new chrome finish which when used with the recently introduced chrome patch cable management bars brings an entirely new, aesthetically enhanced finish to cabinet installations. Each are available with a maximum port density of either 16 or 24 keystone jacks in 1u of rack space.

A rear management tray with purposely designed cable tie positions, is supplied with each panel which is fitted without the need for any tools or fixings by simply snapping it into place.

To complete the installation an earthing kit, and a set of M6 cage nuts is also supplied with the patch panel frame.



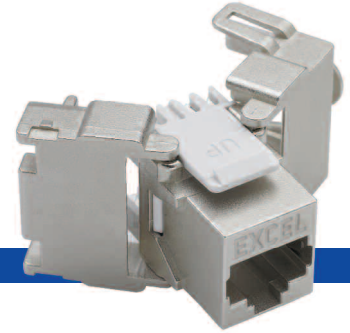
Part No 100-025, black unloaded panel frame with rear management tray.



Part No 100-027, chrome unloaded panel frame with rear management tray.

Part Number Information

Part No.	Description
100-025	Unloaded 16 port 1u Black Patch Panel Frame
100-026	Unloaded 24 port 1u Black Patch Panel Frame
100-041	Unloaded 48 port 2u Black Patch Panel Frame
100-027	Unloaded 16 port 1u Chrome Patch Panel Frame
100-028	Unloaded 24 port 1u Chrome Patch Panel Frame



Part Number Information - Compatible keystones

Part No.	Description
100-906	Category 5e FTP Toolless Keystone Jack
100-210	Category 6 FTP Toolless Keystone Jack
100-180	Category 6a FTP Toolless Keystone Jack

Unshielded toolless keystone jacks to suit these patch panel frames will be available from stock from Autumn 2008 onwards.

Chrome patch cable management bars to suit the above chrome patch panel frames will be available from stock from Autumn 2008 onwards.