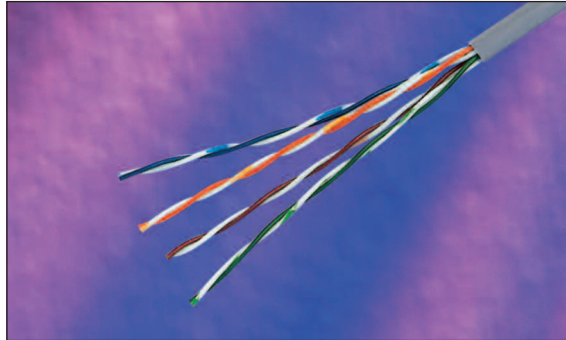


Excel Category 5e Unshielded Twisted Pair (UTP) Cable - Patch Cable



25 Year System Warranty

Supports Gigabit Ethernet

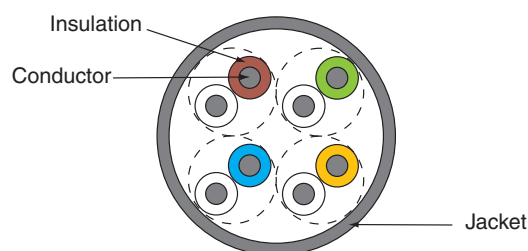
Features

- Category 5e compliant
- Power Sum Compliant
- CM Rated
- Choice of Colours
- 305 Metre Fast Feed Box
- Highly Flexible
- BSRIA Number 1 private label, by market share for the last three years

Product Overview

Excel Category 5e UTP Patch Cables are manufactured, tested and verified to the ISO11801 and EIA/TIA standards for Category 5 enhanced performance.

Each cable consists of 8 colour coded 24AWG polyethelene insulated conductors. These are twisted together to form 4 pairs with varying lay lengths. The printing detail on the heat resistant UL rated sheath, includes the cables part number and specification details.

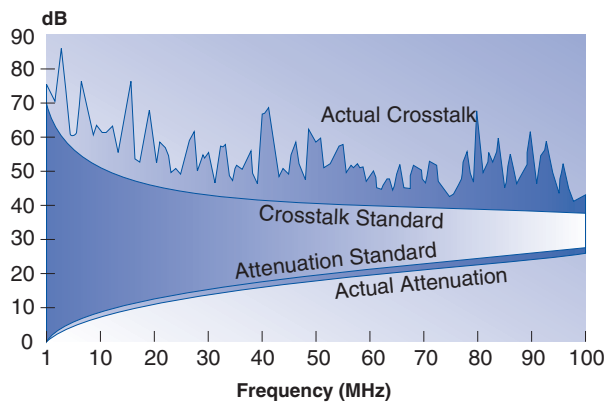


Performance Overview

Excel Category 5e Patch cables are manufactured to and tested to the current Category 5 enhanced standards as defined by the EIA/TIA and ISO standards' bodies. Swept frequency tests are applied to each critical performance characteristic, such as near end cross talk (NEXT) and far end cross talk (FEXT). Both Worst Case and Power Sum Test methods are applied. Actual performance exceeds the required standard by a considerable margin ensuring sufficient headroom for even the most demanding applications.

Performance Table

Frequency (MHz)	Impedance (ohm)	SRL (dB)	Attenuation (dB/100m)	NEXT Worst Pair (dB)	NEXT Power Sum (dB)	ELFEXT Worst Pair (dB)	ELFEXT Power Sum (dB)
0.772		—	2.2	67	64	—	—
1.0		19	2.4	66	62	64	61
4.0		20.8	4.9	57	53	52	49
8.0		21.7	7.0	52	48	46	43
10.0		22	7.8	51	47	44	41
16.0	100 ± 15	22	9.9	48	44	40	37
20.0		22	11.2	46	42	38	35
25.0		21.3	12.5	45	41	36	33
31.25		20.6	14.1	43	39	34	31
62.5		18.5	20.4	39	35	28	25
100.0		17.1	26.4	36	32	24	21



System Warranty

When installed with Excel Patch Panels and Data Outlets by an accredited Excel Cabling Partner, this product is supported by a comprehensive 25 year product warranty.

Typical Applications

- 10 Base-T
- 100 Base-TX
- Token Ring
- 1000 Base T Gigabit Ethernet
- 155 Mbps ATM
- 622 Mbps ATM

Part Number Information

Part No.	Description
100-081-305M	Excel Category 5e Patch Cable Grey, 305MTR Fast Feed Box
100-082-305M	Excel Category 5e Patch Cable Blue, 305MTR Fast Feed Box
100-083-305M	Excel Category 5e Patch Cable Green, 305MTR Fast Feed Box
100-084-305M	Excel Category 5e Patch Cable Black, 305MTR Fast Feed Box
100-085-305M	Excel Category 5e Patch Cable Orange, 305MTR Fast Feed Box
100-086-305M	Excel Category 5e Patch Cable Pink, 305MTR Fast Feed Box
100-087-305M	Excel Category 5e Patch Cable Red, 305MTR Fast Feed Box
100-088-305M	Excel Category 5e Patch Cable Violet, 305MTR Fast Feed Box
100-089-305M	Excel Category 5e Patch Cable White, 305MTR Fast Feed Box
100-091-305M	Excel Category 5e Patch Cable Yellow, 305MTR Fast Feed Box